

## Pluggable Interface Relays and Bases

## CR-M Range (without LED's)



Part Number	Control Voltage	Number of Contacts	Contact Rating	Description	Order Code	Page Nr	ZAR Price
CR-M012DC2	12VDC	2 c/o ( SPDT)	12A @ 250V	8 Pin Pluggable Relay	1SVR405611R4000	248	R134
CR-M024DC2	24VDC	2 c/o ( SPDT)	12A @ 250V	8 Pin Pluggable Relay	1SVR405611R1000	248	R134
CR-M230AC2	230VAC	2 c/o ( SPDT)	12A @ 250V	8 Pin Pluggable Relay	1SVR405611R3000	248	R157
CR-M012DC4	12VDC	4 c/o ( SPDT)	6A @ 250V	14 Pin Pluggable Relay	1SVR405613R4000	248	R142
CR-M024DC4	24VDC	4 c/o ( SPDT)	6A @ 250V	14 Pin Pluggable Relay	1SVR405613R1000	248	R142
CR-M230AC4	230VAC	4 c/o ( SPDT)	6A @ 250V	14 Pin Pluggable Relay	1SVR405613R3000	248	R166
<b>Notes</b> Relays has a test flag function which can be latched. The flag is Green for DC or Orange for AC coils. Relay Bases are DIN 35 Rail Mounted. C/O can be paralleled to increase the Current Rating. Choose the CR-U Range if higher current rating is required.							
<b>Base for CR-M Relays</b>							
CR-M2SS	Blade Terminals		Standard Base for CR-M 2 c/o Relay	1SVR405651R1000	248	R83	
CR-M4SS	Blade Terminals		Standard Base for CR-M 4 c/o Relay	1SVR405651R3000	248	R96	

## Pluggable Interface Relays and Bases

## CR-U Range (without LED's)



Part Number	Control Voltage	Number of Contacts	Contact Rating	Description	Order Code	Page Nr	ZAR Price
CR-U012DC2	12VDC	2 c/o ( SPDT)	12A @ 250V	8 Pin Pluggable Relay	1SVR405621R4000	254	R201
CR-U024DC2	24VDC	2 c/o ( SPDT)	12A @ 250V	8 Pin Pluggable Relay	1SVR405621R1000	254	R201
CR-U230AC2	230VAC	2 c/o ( SPDT)	12A @ 250V	8 Pin Pluggable Relay	1SVR405621R3000	254	R212
CR-U012DC3	12VDC	3 c/o ( SPDT)	10A @ 250V	11 Pin Pluggable Relay	1SVR405622R4000	254	R207
CR-U024DC3	24VDC	3 c/o ( SPDT)	10A @ 250V	11 Pin Pluggable Relay	1SVR405622R1000	254	R207
CR-U230AC3	230VAC	3 c/o ( SPDT)	10A @ 250V	11 Pin Pluggable Relay	1SVR405622R3000	254	R221
<b>Notes</b> Relays has a test flag function which can be latched. The flag is Green for DC or Orange for AC coils. Relay Bases are DIN 35 Rail Mounted. C/O can be paralleled to increase the Current Rating. Choose the CR-M Range if space is a consideration.							
<b>Base for CR-U Relays</b>							
CR-U2S	Round Pin Terminals		Standard Base for CR-U 2 c/o Relay	1SVR405670R0000	254	R100	
CR-U3S	Round Pin Terminals		Standard Base for CR-U 3 c/o Relay	1SVR405660R0000	254	R102	


### Notes:

\* More options on the relays are available on request, ie; CR-M/CR-U with LED and non standard coil voltages.

\* For accessories on the relays or sockets please enquire with us, ie; diode, varistor, gold contacts etc.

\* List of T's & C's appear on page 10 of 10

## Contactors - Three Pole with 230 VAC Coils



Part Number	Order Code	Auxiliary Contacts	Rating			Page Nr	ZAR Price
			AC-3	AC-3	AC-1		
AF09-30-01-13	1SBL137001R1301	1 n/c only	4kW	9A	25A	270	R779
AF12-30-01-13	1SBL157001R1301	1 n/c only	5.5kW	12A	28A	270	R827
AF16-30-01-13	1SBL177001R1301	1 n/c only	7.5kW	16A	30A	270	R1,045
AF26-30-00-13	1SBL237001R1300		11kW	26A	45A	270	R1,362
AF30-30-00-13	1SBL277001R1300		15kW	30A	50A	270	R2,030
AF38-30-00-13	1SBL297001R1300		18.5kW	38A	50A	270	R2,389
AF40-30-00-13	1SBL347001R1300		18.5kW	40A	70A	270	R2,651
AF52-30-00-13	1SBL367001R1300		22kW	52A	100A	270	R2,799
AF65-30-00-13	1SBL387001R1300		30kW	65A	105A	270	R3,751
AF80-30-00-13	1SBL397001R1300		37kW	80A	125A	270	R4,769
AF96-30-00-13	1SBL407001R1300		45kW	96A	130A	270	R4,922
AF116-30-00-13	1SFL427001R1300		55kW	116A	160A	274	R5,141
AF140-30-00-13	1SFL447001R1300		75kW	140A	200A	274	R6,652
AF146-30-00-13	1SFL467001R1300		75kW	146A	225A	274	R7,049
AF190-30-00-13	1SFL487002R1300		90kW	190A	275A	274	R9,346
AF205-30-00-13	1SFL527002R1300		110kW	205A	350A	274	R11,076
AF265-30-00-13	1SFL547002R1300		132kW	265A	400A	274	R14,950
AF305-30-00-13	1SFL587002R1300		160kW	305A	500A	274	R17,311
AF370-30-00-13	1SFL607002R1300		200kW	370A	600A	274	R25,432
AF460-30-11	1SFL597001R7011	1 n/o + 1 n/c	250kW	460A	700A	277	R26,873
AF580-30-11	1SFL617001R7011	1 n/o + 1 n/c	315kW	580A	800A	277	R41,999
AF750-30-11	1SFL637001R7011	1 n/o + 1 n/c	400kW	750A	1050A	277	R50,399
AF1250-30-11	1SFL647001R7011	1 n/o + 1 n/c			1260A	277	R80,949
AF1350-30-11	1SFL657001R7011	1 n/o + 1 n/c	475kW	860A	1350A	277	R111,507
AF1650-30-11	1SFL677001R7011	1 n/o + 1 n/c	560kW	1060A	1650A	277	R137,357
AF2050-30-11	1SFL707001R7011	1 n/o + 1 n/c			2050A	277	R171,697
AF2650-30-11	1SFL667001R7011	1 n/o + 1 n/c			2650A	277	R334,810

## Auxilliaris



Part Number	Order Code	Auxiliary Contacts	Fits Onto Contactors Size	Mounting Position	Page Nr	ZAR Price
CA4-10	1SBN010110R1010	1 n/o only	AF09 - AF96	Front	273	R77
CA4-01	1SBN010110R1001	1 n/c only	AF09 - AF96	Front	273	R77
CAL4-11	1SBN010120R1011	1 n/o + 1 n/c	AF09 - AF96	Side	273	R205
CAL19-11	1SFN010820R1011	1 n/o + 1 n/c	AF116 - AF370	Side	276	R274
CAL18-11	1SFN010720R1011	1 n/o + 1 n/c	AF400 - AF2650	Side	278	R286

## Mechanical Interlocks



VM4	1SBN030105T1000		AF09 - AF38	Between	273	R171
VM96-4	1SBN033405T1000		AF40 - AF96	Between	273	R208
VM19	1SFN030300R1000		AF116 - AF370	Between	274	R1,153
VM750H	1SFN035700R1000		AF400 - AF1250	Between	278	R1,255
VM1650H	1SFN036503R1001		AF1350 - AF2650	Between	278	R4,014

### Notes:

- \* More options of contactors are available. Contact our sales department for details, prices and stock availability.
- \* 12 and 24VDC rated control coil voltages are available on request, as well as 4 pole contactors.
- \* List of T's & C's appear on page 10 of 10.



**SR201T Single Pole MCB's**

Part Number	Rated Current	Rated kA @230VAC (Icu)	Rated kA @230VAC (Ics)	Rated Voltage AC	Order Code	Page Nr	ZAR Price
SR201T-C6	6A	3kA	3kA	230VAC	2CDS231070R0064	12	R62
SR201T-C10	10A	3kA	3kA	230VAC	2CDS231070R0104	12	R62
SR201T-C16	16A	3kA	3kA	230VAC	2CDS231070R0164	12	R62
SR201T-C20	20A	3kA	3kA	230VAC	2CDS231070R0204	12	R62
SR201T-C25	25A	3kA	3kA	230VAC	2CDS231070R0254	12	R62
SR201T-C32	32A	3kA	3kA	230VAC	2CDS231070R0324	12	R62
SR201T-C40	40A	3kA	3kA	230VAC	2CDS231070R0404	12	R62
SR201T-C50	50A	3kA	3kA	230VAC	2CDS231070R0504	12	R79
SR201T-C63	63A	3kA	3kA	230VAC	2CDS231070R0634	12	R79



**SR202T Double Pole MCB's**

Part Number	Rated Current	Rated kA @230VAC (Icu)	Rated kA @230VAC (Ics)	Rated Voltage AC	Order Code	Page Nr	ZAR Price
SR202T-C6	6A	3kA	3kA	400VAC	2CDS232070R0064	12	R147
SR202T-C10	10A	3kA	3kA	400VAC	2CDS232070R0104	12	R147
SR202T-C16	16A	3kA	3kA	400VAC	2CDS232070R0164	12	R147
SR202T-C20	20A	3kA	3kA	400VAC	2CDS232070R0204	12	R147
SR202T-C25	25A	3kA	3kA	400VAC	2CDS232070R0254	12	R147
SR202T-C32	32A	3kA	3kA	400VAC	2CDS232070R0324	12	R147
SR202T-C40	40A	3kA	3kA	400VAC	2CDS232070R0404	12	R147
SR202T-C50	50A	3kA	3kA	400VAC	2CDS232070R0504	12	R198
SR202T-C63	63A	3kA	3kA	400VAC	2CDS232070R0634	12	R198



**SR203T Triple Pole MCB's**

Part Number	Rated Current	Rated kA @230VAC (Icu)	Rated kA @230VAC (Ics)	Rated Voltage AC Only	Order Code	Page Nr	ZAR Price
SR203T-C6	6A	3kA	3kA	400VAC	2CDS233070R0064	13	R216
SR203T-C10	10A	3kA	3kA	400VAC	2CDS233070R0104	13	R216
SR203T-C16	16A	3kA	3kA	400VAC	2CDS233070R0164	13	R216
SR203T-C20	20A	3kA	3kA	400VAC	2CDS233070R0204	13	R216
SR203T-C25	25A	3kA	3kA	400VAC	2CDS233070R0254	13	R216
SR203T-C32	32A	3kA	3kA	400VAC	2CDS233070R0324	13	R216
SR203T-C40	40A	3kA	3kA	400VAC	2CDS233070R0404	13	R216
SR203T-C50	50A	3kA	3kA	400VAC	2CDS233070R0504	13	R294
SR203T-C63	63A	3kA	3kA	400VAC	2CDS233070R0634	13	R294

**Notes:**

- \* Four Pole units are available on request.
- \* Different Tripping Curve types are available on request.
- \* For 6 - 10kA, refer to page 3 of 10

- \* For accessories on the MCB's please enquire with us.
- \* List of T's & C's appear on page 10 of 10.

**S201 Single Pole MCB's**



Part Number	Rated Current	Rated kA @230VAC (Icu)	Rated kA @230VAC (Ics)	Rated Voltage AC & DC	Order Code	Page Nr	ZAR Price
S201-C2	2A	10kA	7.5kA	230VAC-60VDC	2CDS251001R0024	14	R253
S201-C6	6A	10kA	7.5kA	230VAC-60VDC	2CDS251001R0064	14	R187
S201-C10	10A	10kA	7.5kA	230VAC-60VDC	2CDS251001R0104	14	R187
S201-C16	16A	10kA	7.5kA	230VAC-60VDC	2CDS251001R0164	14	R187
S201-C20	20A	10kA	7.5kA	230VAC-60VDC	2CDS251001R0204	14	R187
S201-C25	25A	10kA	7.5kA	230VAC-60VDC	2CDS251001R0254	14	R193
S201-C32	32A	10kA	7.5kA	230VAC-60VDC	2CDS251001R0324	14	R193
S201-C40	40A	10kA	7.5kA	230VAC-60VDC	2CDS251001R0404	14	R193
S201-C50	50A	10kA	7.5kA	230VAC-60VDC	2CDS251001R0504	14	R218
S201-C63	63A	10kA	7.5kA	230VAC-60VDC	2CDS251001R0634	14	R226
S201-C80	80A	6kA	6kA	230VAC-60VDC	2CDS251001R0804	14	R689
S201-C100	100A	6kA	6kA	230VAC-60VDC	2CDS251001R0824	14	R689

**S202 Double Pole MCB's**



Part Number	Rated Current	Rated kA @230VAC (Icu)	Rated kA @230VAC (Ics)	Rated Voltage AC & DC	Order Code	Page Nr	ZAR Price
S202-C2	2A	10kA	7.5kA	400VAC-125VDC	2CDS252001R0024	14	R771
S202-C6	6A	10kA	7.5kA	400VAC-125VDC	2CDS252001R0064	14	R655
S202-C10	10A	10kA	7.5kA	400VAC-125VDC	2CDS252001R0104	14	R599
S202-C16	16A	10kA	7.5kA	400VAC-125VDC	2CDS252001R0164	14	R599
S202-C20	20A	10kA	7.5kA	400VAC-125VDC	2CDS252001R0204	14	R599
S202-C25	25A	10kA	7.5kA	400VAC-125VDC	2CDS252001R0254	14	R686
S202-C32	32A	10kA	7.5kA	400VAC-125VDC	2CDS252001R0324	14	R686
S202-C40	40A	10kA	7.5kA	400VAC-125VDC	2CDS252001R0404	14	R686
S202-C50	50A	10kA	7.5kA	400VAC-125VDC	2CDS252001R0504	14	R730
S202-C63	63A	10kA	7.5kA	400VAC-125VDC	2CDS252001R0634	14	R730
S202-C80	80A	6kA	6kA	400VAC-125VDC	2CDS252001R0804	14	R1,721
S202-C100	100A	6kA	6kA	400VAC-125VDC	2CDS252001R0824	14	R1,721

**S203 Triple Pole MCB's**



Part Number	Rated Current	Rated kA @230VAC (Icu)	Rated kA @230VAC (Ics)	Rated Voltage AC Only	Order Code	Page Nr	ZAR Price
S203-C2	2A	10kA	7.5kA	400VAC	2CDS253001R0024	14	R1,233
S203-C6	6A	10kA	7.5kA	400VAC	2CDS253001R0064	14	R929
S203-C10	10A	10kA	7.5kA	400VAC	2CDS253001R0104	14	R895
S203-C16	16A	10kA	7.5kA	400VAC	2CDS253001R0164	14	R895
S203-C20	20A	10kA	7.5kA	400VAC	2CDS253001R0204	14	R895
S203-C25	25A	10kA	7.5kA	400VAC	2CDS253001R0254	14	R905
S203-C32	32A	10kA	7.5kA	400VAC	2CDS253001R0324	14	R905
S203-C40	40A	10kA	7.5kA	400VAC	2CDS253001R0404	14	R905
S203-C50	50A	10kA	7.5kA	400VAC	2CDS253001R0504	14	R919
S203-C63	63A	10kA	7.5kA	400VAC	2CDS253001R0634	14	R944
S203-C80	80A	6kA	6kA	400VAC	2CDS253001R0804	14	R2,317
S203-C100	100A	6kA	6kA	400VAC	2CDS253001R0824	14	R2,317

**Notes:**

\* Four Pole and Single Pole + N MCB's are available on request.

\* Higher kA ratings are available on request.

\* For 3kA, refer to page 4 of 10

\* Accessories include auxiliaries, bridging bars, etc.

\* Different Tripping Curve types are available on request.

\* For accessories on the MCB's please enquire with us.

\* List of T's & C's appear on page 10 of 10.

## Moulded Case Circuit Breakers Three Pole

## Tmax XT1/XT2/XT3/XT4 MCCB's



Part Number	Frame Size	Amp Rating	kA Rating	Release Type	Page Nr	ZAR Price
1SDA066805R1	XT1	44-63A	18kA	TMD	60	R2,094
1SDA066806R1	XT1	56-80A	18kA	TMD	60	R2,331
1SDA066807R1	XT1	70-100A	18kA	TMD	60	R2,331
1SDA066808R1	XT1	88-125A	18kA	TMD	60	R2,664
1SDA066809R1	XT1	112-160A	18kA	TMD	60	R2,923
1SDA067016R1	XT2	44-63A	36kA	TMD	60	R4,555
1SDA067017R1	XT2	56-80A	36kA	TMD	60	R4,630
1SDA067018R1	XT2	70-100A	36kA	TMD	60	R4,630
1SDA067019R1	XT2	88-125A	36kA	TMD	60	R5,483
1SDA067020R1	XT2	112-160A	36kA	TMD	60	R5,554
1SDA068057R1	XT3	112-160A	36kA	TMD	61	R4,989
1SDA068058R1	XT3	140-200A	36kA	TMD	61	R5,109
1SDA068059R1	XT3	175-250A	36kA	TMD	61	R5,118
1SDA068090R1	XT4	140-200A	36kA	TMD	63	R8,387
1SDA068091R1	XT4	158-225A	36kA	TMD	63	R8,387
1SDA068092R1	XT4	175-250A	36kA	TMD	63	R8,387



Accessories		Auxiliary contacts (AUX)		Page Nr	ZAR Price
Part Number	Frame Size	Configuration C/O Contacts & Trip Contacts	Rated Voltage AC/DC	Page Nr	ZAR Price
1SDA066431R1	XT1...XT6	1Q 1SY	250	71	R1,497
1SDA066433R1	XT1...XT6	2Q 1SY	250	71	R1,762



Accessories		Motor Operators (MOD)		Page Nr	ZAR Price
Part Number	Frame Size	Motor Voltage	These motors bolt onto the front of the breaker to operate the lever. They are fitted with a toggle switch for Auto or Manual operation	Page Nr	ZAR Price
1SDA066457R1	XT1 & XT3	24VDC		71	R6,591
1SDA066460R1	XT1 & XT3	230VAC		71	R6,591
1SDA066463R1	XT2 & XT4	24VDC		71	R11,235
1SDA066466R1	XT2 & XT4	230VAC		71	R11,235

\*Note - XT1 & XT3 motors are not suitable for synchronisation



Accessories		Shunts (SOR & UVR)		Page Nr	ZAR Price
Part Number	Frame Size	Rated Voltage	Description Type of Release	Page Nr	ZAR Price
1SDA066322R1	XT1...XT4	24VDC	Shunt Opening	70	R1,710
1SDA066325R1	XT1...XT4	230VAC	Shunt Opening	70	R1,710
1SDA066399R1	XT1 & XT3	220-240VAC	Shunt Undervoltage	71	R2,169
1SDA066400R1	XT1 & XT3	380-440VAC	Shunt Undervoltage	71	R2,169



Accessories		Mechanical Interlocks (MIR)		Page Nr	ZAR Price
Part Number	Frame Size	Type	Description	Page Nr	ZAR Price
1SDA066637R1	XT1...XT4	MIR-H	Horizontal Interlock Frame (1 req per set)	73	R4,895
1SDA066639R1	XT1	Plate XT1 F	Interlock plates (1 req per breaker)	73	R1,578
1SDA066641R1	XT2	Plate XT2 F	Interlock plates (1 req per breaker)	73	R1,578
1SDA066643R1	XT3	Plate XT3 F	Interlock plates (1 req per breaker)	73	R1,578
1SDA066645R1	XT4	Plate XT4 F	Interlock plates (1 req per breaker)	73	R1,578

### Notes:

\* 4 Pole MCCB's are available on request.

\* Higher and lower kA ratings available on request.

\* List of T's & C's appear on page 10 of 10.

**Moulded Case Circuit Breakers  
Three Pole with TMA & LS/I Type Release and are Fixed Version**

**Tmax XT5/XT6/XT7 MCCB's**



Part Number	Frame Size	Amp Rating	kA Rating	Release Type	Page Nr	ZAR Price
1SDA100344R1	XT5	224-320A	36kA	TMA	65	R12,378
1SDA100345R1	XT5	280-400A	36kA	TMA	65	R12,378
1SDA100346R1	XT5	350-500A	36kA	TMA	65	R17,262
1SDA100347R1	XT5	440-630A	36kA	TMA	65	R17,560
1SDA100353R1	XT5	128-320A	36kA	LS/I	65	R16,029
1SDA100354R1	XT5	160-400A	36kA	LS/I	65	R17,023
1SDA100355R1	XT5	252-630A	36kA	LS/I	65	R19,574
1SDA107561R1	XT6	252-630A	36kA	TMA	66	R25,210
1SDA100718R1	XT6	560-800A	36kA	TMA	66	R31,361
1SDA107562R1	XT6	252-630A	36kA	LS/I	66	R31,947
1SDA100719R1	XT6	320-800A	36kA	LS/I	66	R33,795
1SDA100720R1	XT6	400-1000A	36kA	LS/I	66	R38,241
1SDA101366R1	XT7M	320-800A	50kA	LS/I	68	R37,014
1SDA101367R1	XT7M	400-1000A	50kA	LS/I	68	R38,387
1SDA101368R1	XT7M	500-1250A	50kA	LS/I	68	R45,220
1SDA101369R1	XT7M	640-1600A	50kA	LS/I	68	R52,525

**Accessories**

**Auxiliary contacts (AUX)**

Part Number	Frame Size	Configuration C/O Contacts & Trip Contacts		Rated Voltage AC/DC	Page Nr	ZAR Price
1SDA066431R1	XT1...XT6	1Q	1SY	250	71	R1,497
1SDA073750R1	XT7M	4Q	-	400	71	R852

**Accessories**

**Motor Operators (MOE)**

Part Number	Frame Size	Motor Voltage		Page Nr	ZAR Price
1SDA104879R1	XT5	24VDC	These motors bolt onto the front of the breaker to operate the lever. They are fitted with a toggle switch for Auto or Manual operation	71	R14,638
1SDA104885R1	XT5	230VAC		71	R14,638
1SDA104889R1	XT6	24VDC		71	R16,629
1SDA104895R1	XT6	230VAC		71	R16,629
1SDA104919R1	XT7M	24VDC	These motors are internally fitted.	71	R9,351
1SDA104922R1	XT7M	230VAC		71	R9,351

**Accessories**

**Shunts (YO & YC)**

Part Number	Frame Size	Rated Voltage	Description Type of Release	Page Nr	ZAR Price
1SDA104933R1	XT5/XT6	24VDC	Shunt Opening	70	R1,156
1SDA104934R1	XT5/XT6	230VAC	Shunt Opening	70	R1,156
1SDA073668R1	XT7M	24VDC	Shunt Opening	70	R2,824
1SDA073674R1	XT7M	230VAC	Shunt Opening	70	R4,034
1SDA073681R1	XT7M	24VDC	Shunt Closing	70	R2,824
1SDA073687R1	XT7M	230VAC	Shunt Closing	70	R2,824

**Accessories**

**Mechanical Interlocks (MIR)**

Part Number	Frame Size	Description	Page Nr	ZAR Price
1SDA105117R1	XT5	Horizontal Interlock Frame (1 req per set)	73	R3,189
1SDA105122R1	XT5	Interlock plates (1 req per breaker)	73	R357
1SDA105118R1	XT6	Horizontal Interlock Frame (1 req per set)	73	R8,138
1SDA105126R1	XT6	Interlock plates (1 req per breaker)	73	R1,424
1SDA073881R1	XT7	Cable Kit for interlock (1 req per set)	73	R1,985
1SDA073894R1	XT7	Interlock plates (1 req per breaker)	73	R3,854

**Notes:**

\* 4 Pole MCCB's are available on request.

\* Higher and lower kA ratings available on request.

\* List of T's & C's appear on page 10 of 10.

## Moulded Case Circuit Breakers Three Pole with TMA & PR2xx Type Release and are Fixed Version

### Tmax T4 to T7 MCCB's

Part Number	Frame Size	Amp Rating	kA Rating	Tripping Method	Page Nr	ZAR Price
1SDA054117R1	T4N	320A	36kA	PR221DS-LS/I	84	R14,548
1SDA054437R1	T5N	400A	36kA	TMA	84	R12,378
1SDA054396R1	T5N	630A	36kA	PR221DS-LS/I	84	R19,574
1SDA060214R1	T6N	800A	36kA	TMA	85	R31,361
1SDA061981R1	T7M	800A	50kA	PR231/P-LS/I	88	R37,014
1SDA062754R1	T7M	1000A	50kA	PR231/P-LS/I	88	R38,887
1SDA062882R1	T7M	1250A	50kA	PR231/P-LS/I	88	R45,220
1SDA063010R1	T7M	1600A	50kA	PR231/P-LS/I	88	R52,525

#### Accessories

#### Auxiliary contacts (AUX)

Part Number	Frame Size	Configuration C/O & Trip Contacts	Rated AC/DC Voltage	Page Nr	ZAR Price
1SDA054910R1	T4... T6N	1Q 1SY	250	89	R953
1SDA054911R1	T4... T6N	3Q 1SY	250	89	R1,909
1SDA062102R1	T7M	2Q	400	89	R447

#### Accessories

#### Motor Operators (MOE)

Part Number	Frame Size	Motor Voltage	Motors are used to charge up a spring closing and opening mechanism. The closing operation takes less than 0.1 second. The opening operation is typically 1.5 seconds. This delayed time is acceptable for normal transfers but is too slow when synchronising two separate supplies. For synchronised switching, use shunt opening. The T7 cannot be motorised, only the T7M.	Page Nr	ZAR Price
1SDA054894R1	T4 & T5N	24VDC		90	R14,638
1SDA054897R1	T4 & T5N	230VAC		90	R14,638
1SDA060395R1	T6N	24VDC		90	R16,629
1SDA060398R1	T6N	230VAC		90	R16,629
1SDA062113R1	T7M	24VDC		90	R9,351
1SDA062116R1	T7M	230VAC		90	R8,644

#### Accessories

#### Shunts (SOR & UVR)

Part Number	Frame Size	Rated Voltage	Type Of Release	Page Nr	ZAR Price
1SDA054870R1	T4... T6N	24VDC	Shunt Opening	89	R1,101
1SDA054873R1	T4... T6N	230VAC	Shunt Opening	89	R1,101
1SDA062065R1	T7 & T7M	24VDC	Shunt Opening	89	R1,955
1SDA063548R1	T7 & T7M	230VAC	Shunt Opening	89	R2,084
1SDA062076R1	T7 & T7M	24VDC	Shunt Closing	89	R1,955
1SDA062081R1	T7 & T7M	230VAC	Shunt Closing	89	R2,084
1SDA054891R1	T4... T6N	220-240VAC	Shunt Under Volt	89	R1,519
1SDA054892R1	T4... T6N	380-440VAC	Shunt Under Volt	89	R1,519
1SDA063552R1	T4 & T5N	220-240VAC	Shunt Under Volt	89	R2,084
1SDA062093R1	T7 & T7M	380-440VAC	Shunt Under Volt	89	R2,084

#### Accessories

#### Mechanical Interlocks (MIR)

Part Number	Frame Size	Description	Page Nr	ZAR Price
1SDA054946R1	T4 & T5N	Horizontal interlock frame (1 req / set)	91	R3,189
1SDA054948R1	T4 & T4N	Interlock plates T4 + T4 breakers (1 req per set)	91	R1,594
1SDA054951R1	T5 & T5N	Interlock plates T5 + T5 breakers (1 req per set)	91	R1,594
1SDA060685R1	T6N	Horizontal interlock complete (1 req per set)	91	R8,138
1SDA062127R1	T7 & T7M	Cable Kit for interlock (1 req per set)	91	R1,197
1SDA062129R1	T7 & T7M	Plate for fixed unit (2 req per set)	91	R3,756

#### Notes:

\* 4 Pole MCCB's are available on request.

\* **NB** - Only the T7M can be motorised. The T7 can not be motorised.

\* List of T's & C's appear on page 10 of 10.

## Air Circuit Breakers E1.2 to E6.2 Three Pole Fixed Version Emax with Ekip Touch LI Release



Part Number	Frame Size	Amp Rating	kA Rating	Tripping Method	Page Nr	ZAR Price
1SDA070784R1	E1.2B	1000A	42kA	Ekip Touch LI	100	R39,894
1SDA070824R1	E1.2B	1250A	42kA	Ekip Touch LI	100	R43,378
1SDA070864R1	E1.2B	1600A	42kA	Ekip Touch LI	100	R43,966
1SDA071024R1	E2.2B	2000A	42kA	Ekip Touch LI	101	R59,089
1SDA071064R1	E2.2N	2500A	66kA	Ekip Touch LI	101	R83,250
1SDA071144R1	E4.2N	3200A	66kA	Ekip Touch LI	102	R93,720
1SDA071194R1	E4.2N	4000A	66kA	Ekip Touch LI	102	R112,464
1SDA071264R1	E6.2H	5000A	100kA	Ekip Touch LI	103	R302,656
1SDA071294R1	E6.2H	6300A	100kA	Ekip Touch LI	103	R411,193

**NB! There are built-in auxiliaries(4 x C/O) on the Emax range.**

### Accessories

#### Auxiliary contacts (AUX)

Part Number	Frame Size	Configuration C/O & Trip Contacts	Rated Voltage AC/DC	Page Nr	ZAR Price
1SDA073750R1	E1.2	4Q -	400	111	R852
1SDA073753R1	E2.2 to E6.2	4Q -	400	111	R3,748
1SDA073776R1	E1.2	- 1SY	250	111	R1,855
1SDA073778R1	E2.2 to E6.2	- 1SY	250	111	R1,855

### Accessories

#### Motor Operators (MOE)

Part Number	Frame Size	Motor Voltage	Page Nr	ZAR Price
1SDA073708R1	E1.2	24VDC	111	R17,924
1SDA073711R1	E1.2	230VAC	111	R17,924
1SDA073722R1	E2.2 to E6.2	24VDC	111	R18,697
1SDA073725R1	E2.2 to E6.2	230VAC	111	R18,697

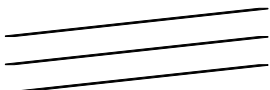
### Accessories

#### Shunts (YO, YC & YU)

Part Number	Frame Size	Rated Voltage	Type Of Release	Page Nr	ZAR Price
1SDA073668R1	E1.2 to E6.2	24VDC	Shunt Opening (YO)	111	R2,824
1SDA073674R1	E1.2 to E6.2	230VAC	Shunt Opening (YO)	111	R4,034
1SDA073681R1	E1.2 to E6.2	24VDC	Shunt Closing (YC)	111	R2,824
1SDA073687R1	E1.2 to E6.2	230VAC	Shunt Closing (YC)	111	R2,824
1SDA073700R1	E1.2 to E6.2	220-240VAC	Shunt Undervoltage (YU)	111	R4,277
1SDA073703R1	E1.2 to E6.2	380-400VAC	Shunt Undervoltage (YU)	111	R3,902

### Accessories

#### Mechanical Interlocks (MIR)

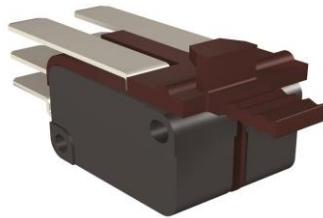
Part Number	Frame Size	Type	Description	Page Nr	ZAR Price
1SDA073881R1	E1.2 to E6.2	A - Horizontal	Cable Kit (1 req per set)	114	R1,985
1SDA073889R1	E2.2		Lever Kit (2 req per set)	114	R4,234
1SDA073890R1	E4.2		Lever Kit (2 req per set)	114	R5,110
1SDA073891R1	E6.2		Lever Kit (2 req per set)	114	R5,110
1SDA073893R1	E1.2	A - Floor Mounted	Support Kit (2 req per set)	114	R5,506
1SDA073895R1	E2.2 to E6.2	A, B & D	Support Kit (2 req per set)	114	R5,506

### Notes:

\* 4 pole, withdrawable and higher current rating ACB's are available on request.

\* Refer to ABB 2023 Price Catalogue for specified page numbers.

\* List of T's & C's appear on page 10 of 10







## Motorised Change Over Switches

### Three Pole Type OTM



Part Number	Frame Sizes	Rated Current AC22A @ 400VAC	Rated Power AC22A @ 400VAC	Motor Voltage	Page Nr	ZAR Price
1SCA120096R1001	OTM40F3CMA230V	40A	27kVA	230VAC	131	R13,754
1SCA120095R1001	OTM63F3CMA230V	63A	43kVA	230VAC	131	R14,995
1SCA120093R1001	OTM80F3CMA230V	80A	55kVA	230VAC	131	R16,780
1SCA120071R1001	OTM100F3CMA230V	100A	70kVA	230VAC	131	R18,351
1SCA120070R1001	OTM125F3CMA230V	125A	86kVA	230VAC	131	R19,412
1SCA022845R8610	OTM160E3CM230V	160A	110kVA	230VAC	131	R22,443
1SCA022845R8960	OTM200E3CM230V	200A	135kVA	230VAC	131	R27,455
1SCA022845R9260	OTM250E3CM230V	250A	170kVA	230VAC	131	R27,688
1SCA022847R1210	OTM315E3CM230V	315A	215kVA	230VAC	131	R38,878
1SCA022847R1630	OTM400E3CM230V	400A	275kVA	230VAC	131	R45,917
1SCA103567R1001	OTM630E3CM230V	630A	435kVA	230VAC	132	R55,030
1SCA103570R1001	OTM800E3CM230V	800A	550kVA	230VAC	132	R69,363
1SCA112677R1001	OTM1000E3CM230V	1000A	680kVA	230VAC	132	R96,631
1SCA112676R1001	OTM1250E3CM230V	1250A	850kVA	230VAC	132	R104,604
1SCA112678R1001	OTM1600E3CM230V	1600A	1000kVA	230VAC	132	R135,619
1SCA112709R1001	OTM2000E3CM230V	2000A	1350kVA	230VAC	132	R204,720
1SCA112710R1001	OTM2500E3CM230V	2500A	1700kVA	230VAC	132	R210,566
1SCA022845R8110	OTM160E3CM24D	160A	110kVA	24VDC	133	R22,443
1SCA022845R8290	OTM200E3CM24D	200A	135kVA	24VDC	133	R27,455
1SCA022845R8370	OTM250E3CM24D	250A	170kVA	24VDC	133	R27,688
1SCA022847R0910	OTM315E3CM24D	315A	215kVA	24VDC	133	R38,878
1SCA022847R1390	OTM400E3CM24D	400A	275kVA	24VDC	133	R45,917
1SCA022873R1210	OTM630E3CM24D	630A	435kVA	24VDC	133	R55,030
1SCA022872R5910	OTM800E3CM24D	800A	550kVA	24VDC	133	R69,363
1SCA113672R1001	OTM1000E3CM24D	1000A	680kVA	24VDC	133	R96,631
1SCA113671R1001	OTM1250E3CM24D	1250A	850kVA	24VDC	133	R104,604
1SCA113673R1001	OTM1600E3CM230V	1600A	1000kVA	24VDC	133	R135,619
1SCA113695R1001	OTM2000E3CM230V	2000A	1350kVA	24VDC	133	R204,720
1SCA113696R1001	OTM2500E3CM230V	2500A	1700kVA	24VDC	133	R210,566

#### Accessories

#### Auxiliary contacts (AUX)

Part Number	Frame Size Range	Auxiliary Contacts
1SCA022353R4970	OTM40 to OTM3200	1 n/o
1SCA022353R4890	OTM40 to OTM3200	1 n/c



Installation Side	Page Nr	ZAR Price
Right	136	R274
Right	136	R301

Depending on your electrical design, two auxiliaries may be required. One to indicate that the switch is in position I and another to indicate the switch is in position II. A maximum of 8(4 per switch) auxiliary blocks can be used on the OTM range 160A and above.

#### Accessories

#### Bridging Bars (3 per Set)

Part Number	Frame Size Range	Type
1SCA117037R1001	OTM40 to OTM125	OMZC03
1SCA022767R6910	OTM160 to OTM250	OTZC13
1SCA022767R7120	OTM315 to OTM400	OTZC23
1SCA022785R7020	OTM630 to OTM800	OTZC33
1SCA022868R0710	OTM1000 to OTM1250	OTZC43
1SCA022868R0980	OTM1600	OTZC53
1SCA022868R1100	OTM2000 to OTM2500	OTZC63



Buying bridging bars negates the necessity of building bus bars or making electrical links connecting S1 and S2 on the load side of the switch.

Page Nr	ZAR Price
137	R1197
138	R773
138	R1,091
138	R2,271
138	R7,360
138	R10,902
138	R20,896

#### Notes:

\* OTM's with 230VAC rated motors are available on request.  
\* OTM's with 4-pole option are available on request.

\* OTM's with higher and lower Amperage ratings are available on request.  
\* List of T's & C's appear on page 10 of 10.



E91/32





E93/32

## Fuse Holders

Part Number	Max Rated Current	Number of Poles	Width Multiples of 18mm	Max Rated AC Voltage	Order Code	ZAR Price
E91/32	32A	1	1	690	2CSM200923R1801	R84
E93/32	32A	3	3	690	2CSM204753R1801	R337

## Fuses

Part Number	Rated Current		ZAR Price	
1038.01A	1A	 <p>All Fuses are 10 x 38mm and cylindrical in shape</p> 	R19	
1038.02A	2A		R19	
1038.04A	4A		R19	
1038.06A	6A		R19	
1038.08A	8A		R19	
1038.10A	10A		R19	
1038.12A	12A		R19	
1038.16A	16A		R19	
1038.20A	20A		R19	
1038.25A	25A		R19	
1038.32A	32A		R19	
1038.N	NA		Neutral Link	R11

**Function:** Fuses are used to protect equipment against overload and short-circuits. The fuse blows when current flowing through it exceeds the rating.

**Notes:**

- \* Single Pole plus Neutral Fuse Holders are available on request.
- \* Triple Pole plus Neutral Fuse Holders are available on request.
- \* Photovoltaic type (1000V) Fuse Holders are available on request.
- \* 500V Fuses are to IEC269 Standards.
- \* For more information on Fuse Holders (Page 11) or any other produce, please refer to ABB 2023 Catalogue.

**T's & C's:**

- 1) All prices exclude VAT and are ex stores Germiston Gauteng.
- 2) Items sold are subject to our standard trading conditions which are available on request.
- 3) All prices that appear on these lists are subject to change without notice. When placing orders, please confirm price and availability.
- 4) Check with sales that the current price list issue, appearing top left, is being used.
- 5) The Company reserves the right to change the price of goods, based on fluctuation of exchange rate.
- 6) All goods remain the property of Hagar Distribution until payment in full is received.